



# ASF SHIP MACHINERY

SHIP REPAIR  
MAINTENANCE  
HYDRAULIC SYSTEMS  
SPARE PARTS SUPPLY

FAST • RELIABLE • PROFESSIONAL



## SHIP REPAIR

All types of ship repair and maintenance services



## HYDRAULIC SYSTEMS

Hydraulic system design, maintenance and repair



## DECK MACHINERY

Deck machinery repair, overhaul and maintenance



## SPARE PARTS SUPPLY

Genuine spare parts supply and logistics support

@asfgemimakina — 2026

 **ISTANBUL / TURKEY**  
ALL PORTS SERVICE

# YOUR GLOBAL TRUSTED MARINE SERVICE PARTNER

SHIP REPAIR • HYDRAULIC SYSTEMS • DECK MACHINERY

ASF Ship Machinery is a leading marine service provider based in Istanbul, delivering comprehensive ship repair, maintenance, hydraulic solutions, and spare parts supply across all Turkish ports.

Backed by decades of hands-on industry expertise and a highly specialized technical team, we support shipowners, operators, and technical managers with fast, precise, and cost-efficient solutions tailored to their operational needs.

With a strong commitment to minimizing downtime and maximizing vessel performance, we operate with a 24/7 rapid response capability—ensuring seamless, reliable, and high-quality service anytime, anywhere.

## Mission

Our mission at ASF Ship Machinery is to deliver fast, reliable, and high-quality solutions in ship repair, maintenance, and hydraulic systems, in line with international standards, ensuring the highest level of operational continuity for our clients.

With our highly skilled technical team and results-driven approach, we go beyond service delivery—aiming to build long-term partnerships that create sustainable value for our clients.

## Vision

Our vision is to become one of the leading and most trusted companies in ship repair and technical services, recognized for reliability, speed, and quality across Türkiye and the global maritime industry. Driven by continuous improvement, technical excellence, and a customer-centric approach, we aim to set new industry benchmarks and establish ASF Ship Machinery as a strong, globally preferred brand.

FAST • RELIABLE • PROFESSIONAL

# ASF SHIP MACHINERY

## COMPREHENSIVE MARINE SERVICES

Reliable Solutions, Expert Support, Maximum Performance



### FIELD SERVICES

- **Advanced Fault Intelligence:** High-precision diagnostics combined with rapid on-site intervention to ensure uninterrupted vessel performance.
- **Mission-Critical Response:** 24/7 dedicated technical support delivering immediate, reliable solutions to safeguard your operations.
- **Class & Compliance Assurance:** Class-approved testing and full alignment with international maritime standards, ensuring complete regulatory confidence.



### SPECIALIZED EXPERTISE

- **Ship Crane Excellence:** High-precision overhaul and performance optimization for all crane and lifting systems.
- **Advanced Steering Systems:** Mission-critical maintenance ensuring superior control, safety, and maneuverability.
- **Cargo Access Hydraulics:** Integrated, end-to-end solutions for hatch covers, ramps, and hydraulic door systems.
- **Deck Machinery Expertise:** Specialized repair and optimization of windlass and mooring equipment for maximum reliability.
- **Lifesaving System Assurance:** Certified inspection, maintenance, and readiness of davits and rescue winches in full compliance with international standards.



### WORKSHOP OPERATIONS

- **Mechanical Excellence:** Precision-engineered workshop overhauls delivering superior reliability and long-term operational integrity.
- **System Modernization:** Performance-driven hydraulic upgrades designed to enhance efficiency, responsiveness, and system longevity.
- **Asset Restoration:** Comprehensive refurbishment solutions extending equipment lifecycle while maximizing operational value.



### COMPONENT RENEWAL

- **Hydraulic System :** Advanced diagnostics, precision repair, and performance calibration of cylinders, control valves, and hydraulic pumps to ensure optimal system efficiency and reliability.
- **Custom Fabrication & Engineering Solutions:** Design-driven manufacturing of purpose-built components, supported by technical revisions and engineering validation for seamless system integration.

FAST ✦ RELIABLE ✦ PROFESSIONAL

# DECK & HYDRAULIC

## SYSTEM SERVICES



### DECK MACHINERY & LIFTING EQUIPMENT

- Mooring Winch / Windlass / Capstan
- Deck & Provision Cranes
- Towing & Trawl Winches

#### Services:

- Brake load testing
- Shaft & drum alignment
- Gear backlash check
- Wire rope analysis
- Safety & limit switch inspection



### HYDRAULIC SYSTEMS

- Pressure & flow testing
- Leakage analysis
- Valve & manifold inspection
- Oil & filtration analysis

#### Overhaul:

- Pumps / Motors / Cylinders



### DAVIT SYSTEMS (SOLAS)

- Rescue Boat & Free Fall Davit

#### Services:

- SOLAS / IMO test preparation
- Launch & recovery testing
- Hydraulic system check
- Hook release inspection



### STEERING GEAR (SHIP STEERING SYSTEMS)

- Feedback & Sensor calibration
- Hydraulic power unit inspection
- Emergency steering system test support



**24/7 SUPPORT**  
Always available,  
anytime, anywhere.



**RELIABLE SERVICE**  
Safety, quality and  
reliability you can trust.



**EXPERT TEAM**  
Experienced engineers  
and technical specialists.



**ALL TURKISH PORTS**  
Proudly serving all  
Turkish ports.

FAST • RELIABLE • PROFESSIONAL

# WORKSHOP

## TEST CAPABILITIES



### REVISION & WORKSHOP

- Gearboxes (heavy duty)
- Hydraulic pumps & motors
- Winch brake systems
- Cylinders repair

#### Process:

- Dismantling & inspection
- Precision measurement
- Part repair / manufacturing
- Assembly & testing



### TEST & QUALITY

- Static Load testing
- Brake holding capacity testing
- Hydraulic pressure tests
- Functional testing

#### Standards:

- SOLAS / IMO
- Class (BV, DNV, LR)



**24/7 SUPPORT**  
Always available,  
anytime, anywhere.



**RELIABLE SERVICE**  
Safety, quality and  
reliability you can trust.



**EXPERT TEAM**  
Experienced engineers  
and technical specialists.



**ALL TURKISH PORTS**  
Proudly serving all  
Turkish ports.

FAST • RELIABLE • PROFESSIONAL

# MANUFACTURING & PROJECTS



## COMPONENT & MANUFACTURING CAPABILITY

- Precision machining (shafts, bushings, gears)
- Reverse engineering (sample-based production)
- Manufacturing according to technical drawings

### Main Products:

- Crane drums
- Gear & shaft manufacturing
- Hydraulic cylinder components
- Manifold blocks



## PROJECT BASED PRODUCTIONS

### Winch & Deck Systems

- Mooring Winch
- Capstan
- Anchor Windlass

### Crane Systems

- Service Crane
- Hose Handling Crane
- Gantry Crane

### Lifesaving Systems

- Rescue Boat Davit
- Free Fall Davit



## DECK EQUIPMENT PRODUCTION

- Bollards
- Chocks
- Pad Eyes / Lifting Points
- Chain Stoppers
- Rollers / Sheaves
- Fairleads Systems
- ASF700 Brake Test Kit



**24/7 SUPPORT**  
Always available,  
anytime, anywhere.



**RELIABLE SERVICE**  
Safety, quality and  
reliability you can trust.



**EXPERT TEAM**  
Experienced engineers  
and technical specialists.



**ALL TURKISH PORTS**  
Proudly serving all  
Turkish ports.

FAST • RELIABLE • PROFESSIONAL

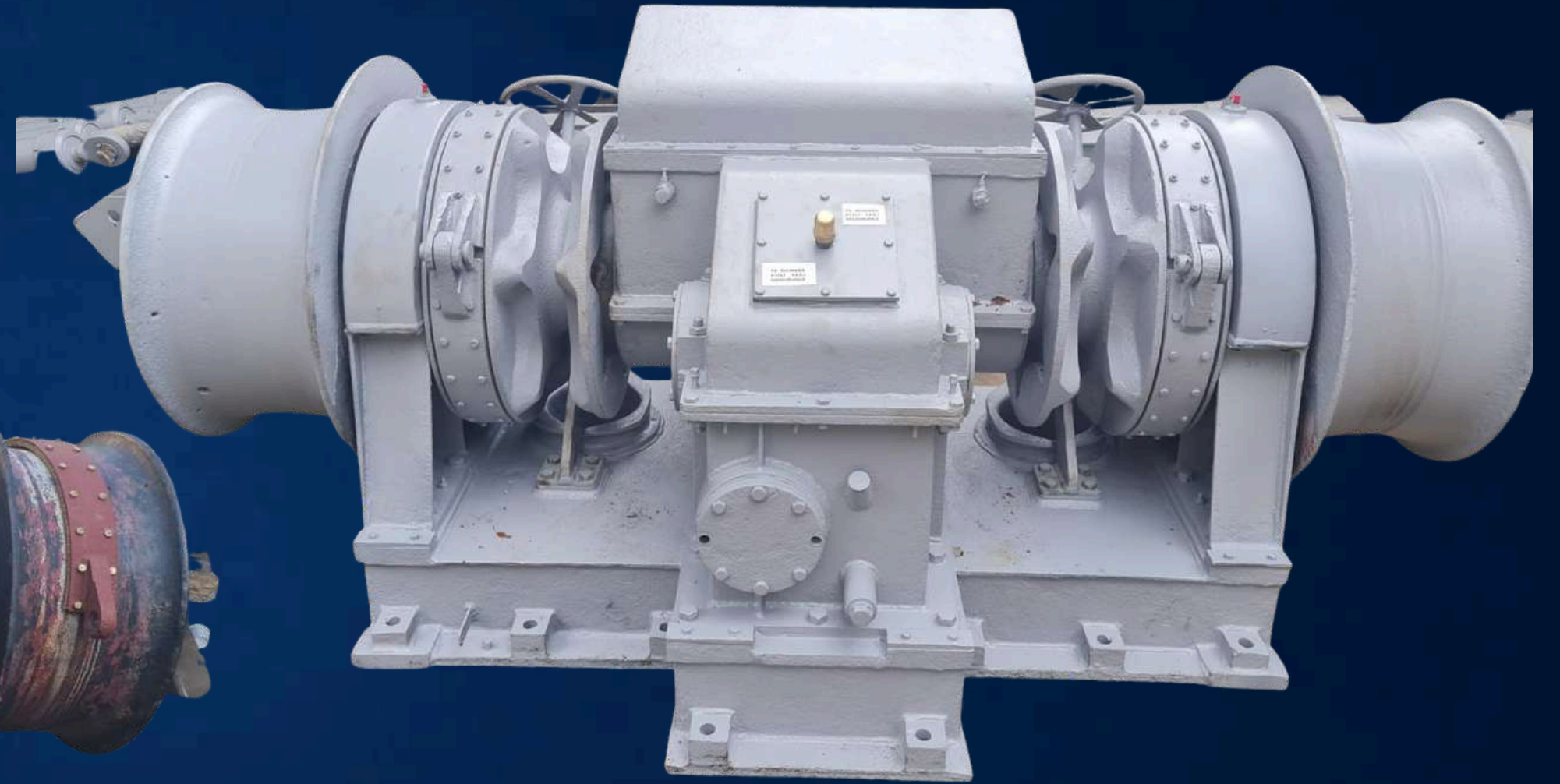
# ASF SHIP MACHINERY

## ANCHOR WINDLAS

Before Overhaul



After Complete Refurbishment



**24/7 SUPPORT**  
Always available,  
anytime, anywhere.



**RELIABLE SERVICE**  
Safety, quality and  
reliability you can trust.



**EXPERT TEAM**  
Experienced engineers  
and technical specialists.



**ALL TURKISH PORTS**  
Proudly serving all  
Turkish ports.

FAST • RELIABLE • PROFESSIONAL

# ASF SHIP MACHINERY

## KNUCKLE BOOM CRANE



**24/7 SUPPORT**  
Always available,  
anytime, anywhere.



**RELIABLE SERVICE**  
Safety, quality and  
reliability you can trust.



**EXPERT TEAM**  
Experienced engineers  
and technical specialists.

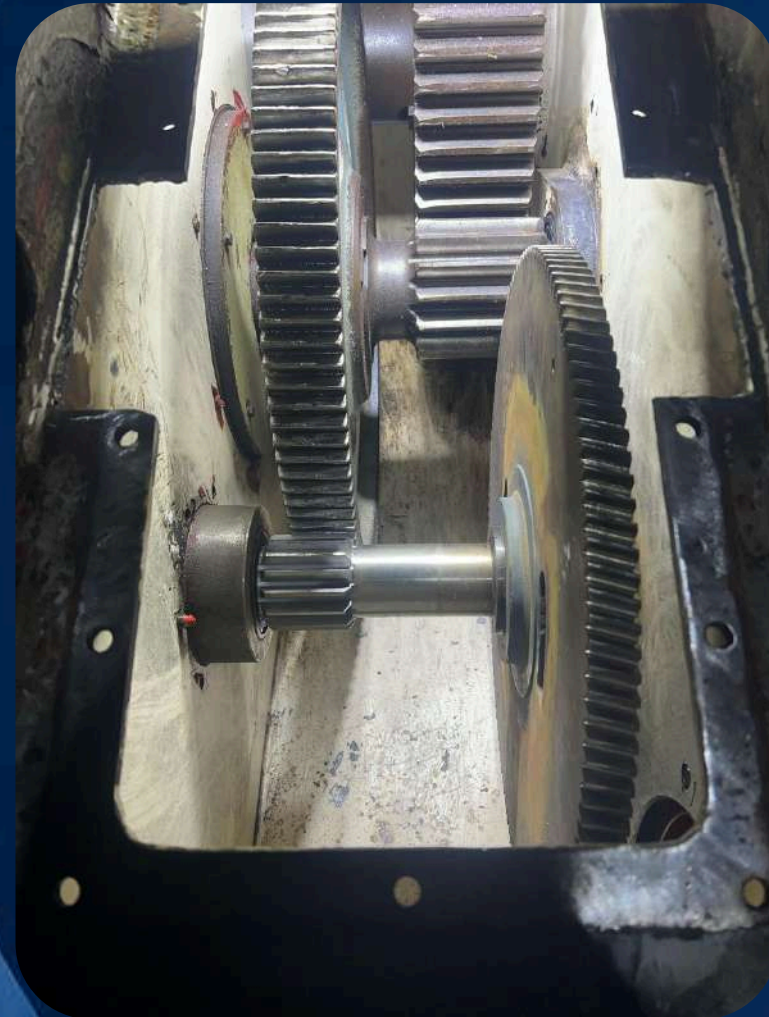


**ALL TURKISH PORTS**  
Proudly serving all  
Turkish ports.

FAST • RELIABLE • PROFESSIONAL

# ASF SHIP MACHINERY

## FIELD SERVICES ANCHOR WINDLASS GEAR BOX REPAIR



**24/7 SUPPORT**  
Always available,  
anytime, anywhere.



**RELIABLE SERVICE**  
Safety, quality and  
reliability you can trust.



**EXPERT TEAM**  
Experienced engineers  
and technical specialists.

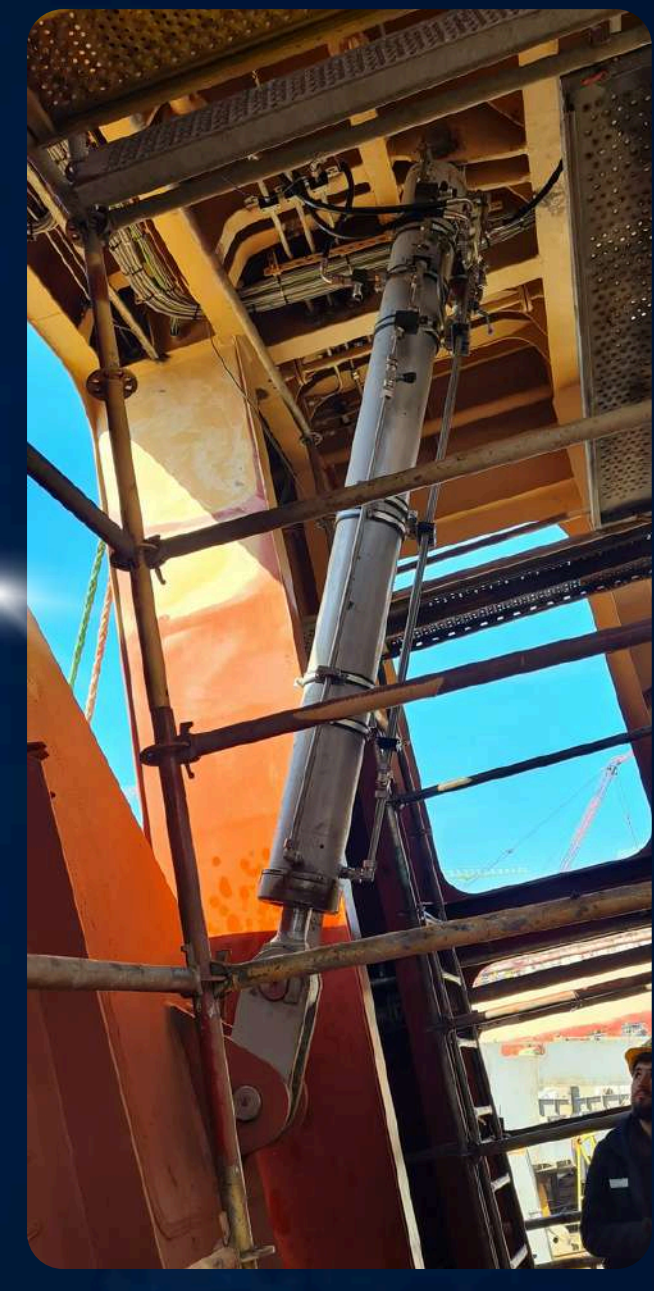
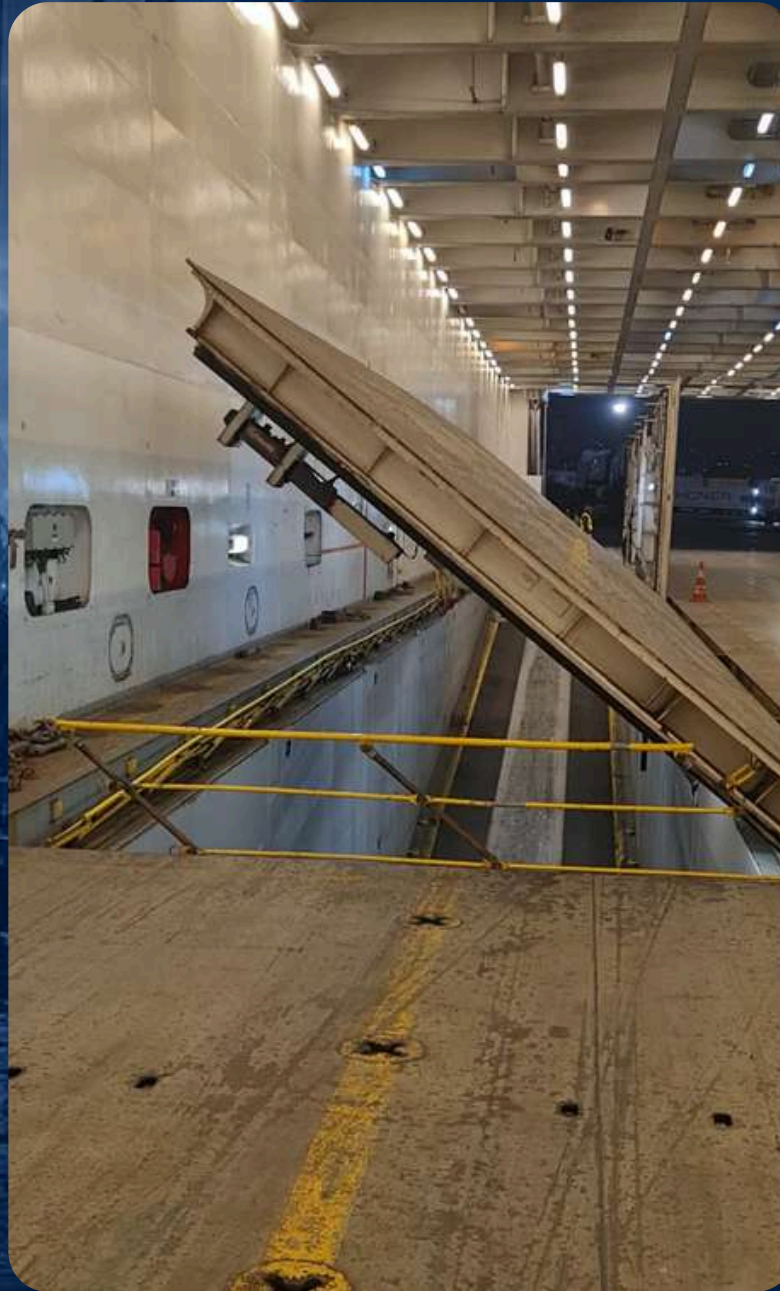


**ALL TURKISH PORTS**  
Proudly serving all  
Turkish ports.

FAST • RELIABLE • PROFESSIONAL

# ASF SHIP MACHINERY

FIELD SERVICES RAMP, STERN DOOR CAR DECK DOOR HYD. and  
MEC.SYSTEM REPAIR & MAINTENANCE



**24/7 SUPPORT**  
Always available,  
anytime, anywhere.



**RELIABLE SERVICE**  
Safety, quality and  
reliability you can trust.



**EXPERT TEAM**  
Experienced engineers  
and technical specialists.



**ALL TURKISH PORTS**  
Proudly serving all  
Turkish ports.

FAST • RELIABLE • PROFESSIONAL

# ASF SHIP MACHINERY

## WORKSHOP PRODUCTION and REPAIR



**24/7 SUPPORT**  
Always available,  
anytime, anywhere.



**RELIABLE SERVICE**  
Safety, quality and  
reliability you can trust.



**EXPERT TEAM**  
Experienced engineers  
and technical specialists.



**ALL TURKISH PORTS**  
Proudly serving all  
Turkish ports.

FAST • RELIABLE • PROFESSIONAL

# ASF SHIP MACHINERY

## WORKSHOP SCRAPER & PAINTING



**24/7 SUPPORT**  
Always available,  
anytime, anywhere.



**RELIABLE SERVICE**  
Safety, quality and  
reliability you can trust.



**EXPERT TEAM**  
Experienced engineers  
and technical specialists.

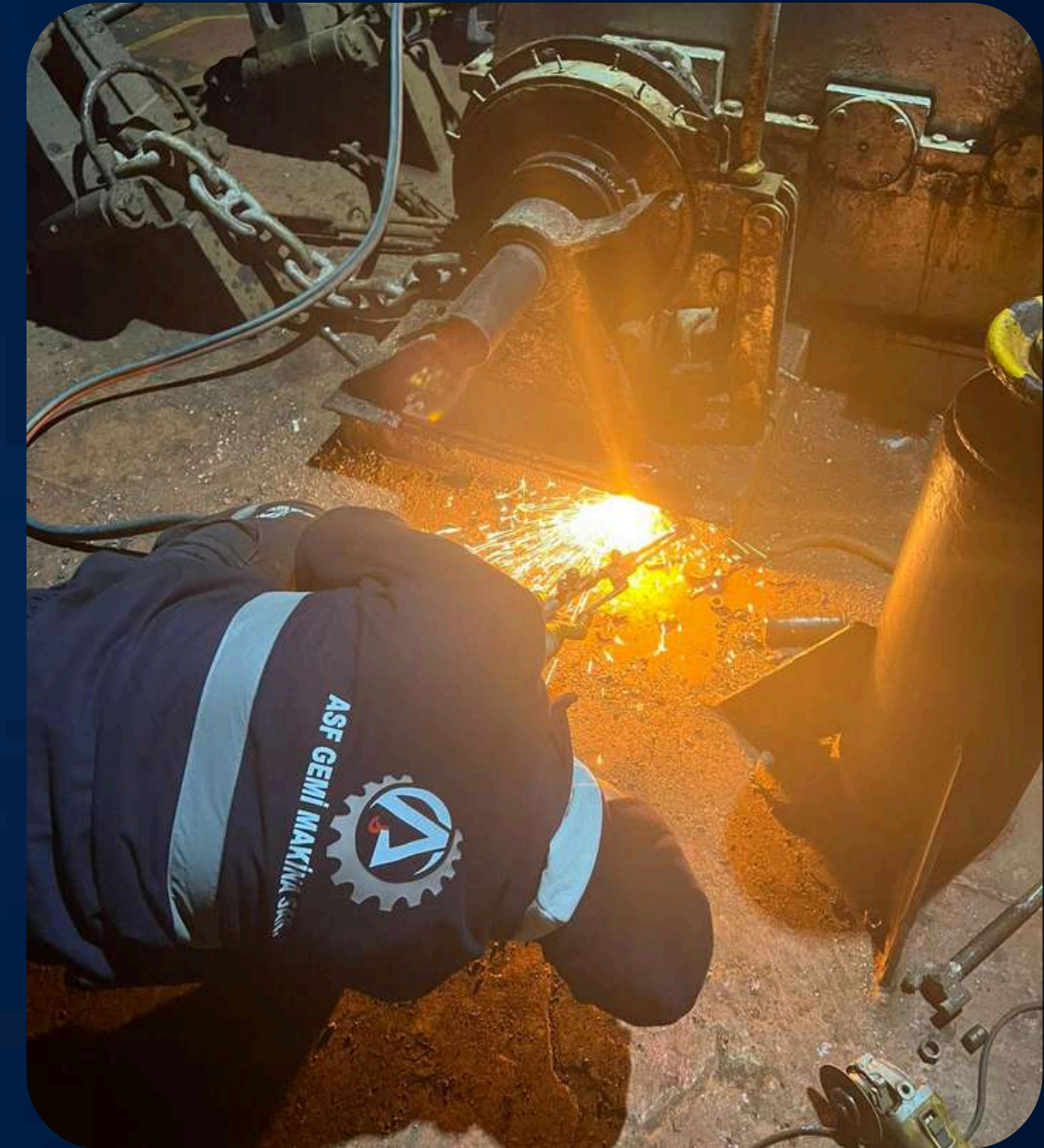


**ALL TURKISH PORTS**  
Proudly serving all  
Turkish ports.

FAST • RELIABLE • PROFESSIONAL

# ASF SHIP MACHINERY

## CHAIN LIFTER SERVICES



**24/7 SUPPORT**  
Always available,  
anytime, anywhere.



**RELIABLE SERVICE**  
Safety, quality and  
reliability you can trust.



**EXPERT TEAM**  
Experienced engineers  
and technical specialists.



**ALL TURKISH PORTS**  
Proudly serving all  
Turkish ports.

FAST • RELIABLE • PROFESSIONAL

# ASF SHIP MACHINERY

## STEERING GEAR COMMISSIONING



**24/7 SUPPORT**  
Always available,  
anytime, anywhere.



**RELIABLE SERVICE**  
Safety, quality and  
reliability you can trust.



**EXPERT TEAM**  
Experienced engineers  
and technical specialists.

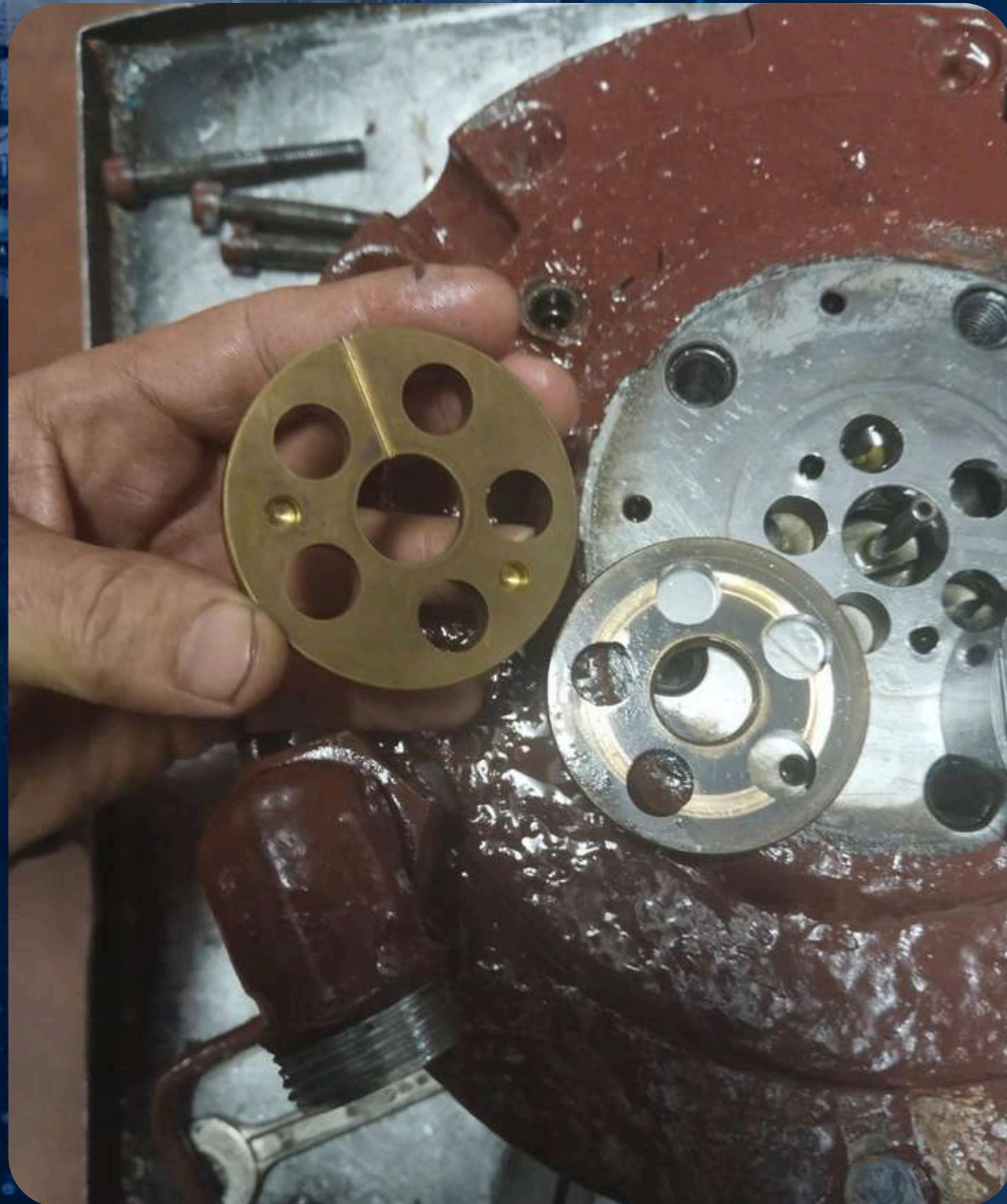


**ALL TURKISH PORTS**  
Proudly serving all  
Turkish ports.

FAST • RELIABLE • PROFESSIONAL

# ASF SHIP MACHINERY

## PARTS REPAIR & RENEWAL



**24/7 SUPPORT**  
Always available,  
anytime, anywhere.



**RELIABLE SERVICE**  
Safety, quality and  
reliability you can trust.



**EXPERT TEAM**  
Experienced engineers  
and technical specialists.

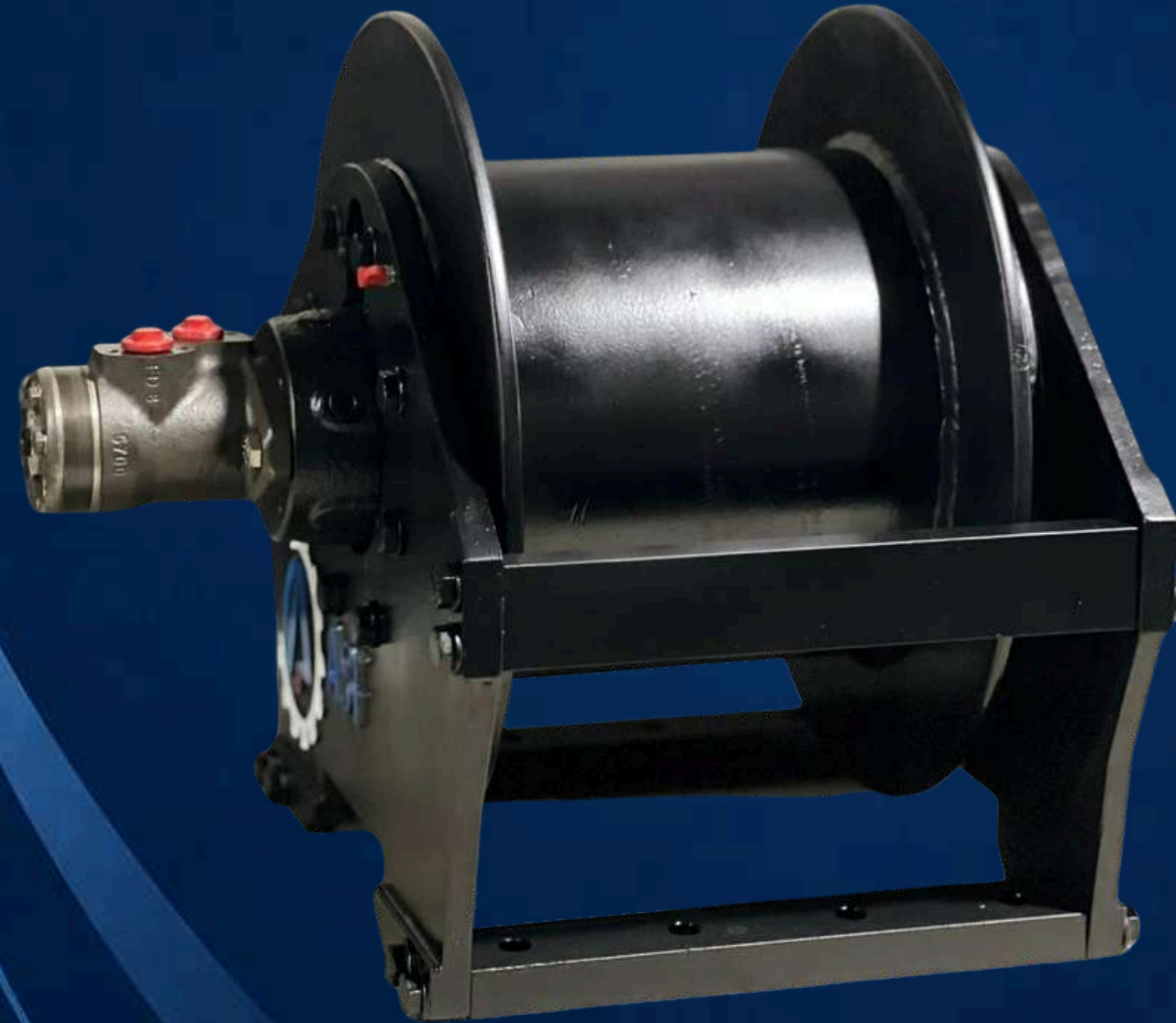


**ALL TURKISH PORTS**  
Proudly serving all  
Turkish ports.

FAST • RELIABLE • PROFESSIONAL

# ASF SHIP MACHINERY

## MANUFACTURING 3-TON ROPE DRUM



**24/7 SUPPORT**  
Always available,  
anytime, anywhere.



**RELIABLE SERVICE**  
Safety, quality and  
reliability you can trust.



**EXPERT TEAM**  
Experienced engineers  
and technical specialists.



**ALL TURKISH PORTS**  
Proudly serving all  
Turkish ports.

FAST • RELIABLE • PROFESSIONAL

# ASF SHIP MACHINERY

Subcontracted Manufacturing and Assembly



**24/7 SUPPORT**  
Always available,  
anytime, anywhere.



**RELIABLE SERVICE**  
Safety, quality and  
reliability you can trust.



**EXPERT TEAM**  
Experienced engineers  
and technical specialists.



**ALL UK PORTS**  
Providing service to  
all UK ports.

FAST • RELIABLE • PROFESSIONAL

# ASF SHIP MACHINERY

Subcontracted Manufacturing and Assembly



**24/7 SUPPORT**  
Always available,  
anytime, anywhere.



**RELIABLE SERVICE**  
Safety, quality and  
reliability you can trust.



**EXPERT TEAM**  
Experienced engineers  
and technical specialists.



**ALL TURKISH PORTS**  
Proudly serving all  
Turkish ports.

FAST • RELIABLE • PROFESSIONAL

# ASF SHIP MACHINERY


YRENH CAM PIHS FSA


## YOUR RELIABLE MARINE SERVICE PARTNER

 24/7 SUPPORT

 ALL TURKISH PORTS

 FAST RESPONSE

 Istanbul / Türkiye

 +90 216 232 32 37

 info@asfgemimakina.com

 www.asfgemimakina.com



**SERVING ALL TURKISH PORTS**  
Onboard & Workshop Solutions



Contact us for immediate technical support and quotations.

 FAST

 RELIABLE

 PROFESSIONAL



SCAN TO VISIT